



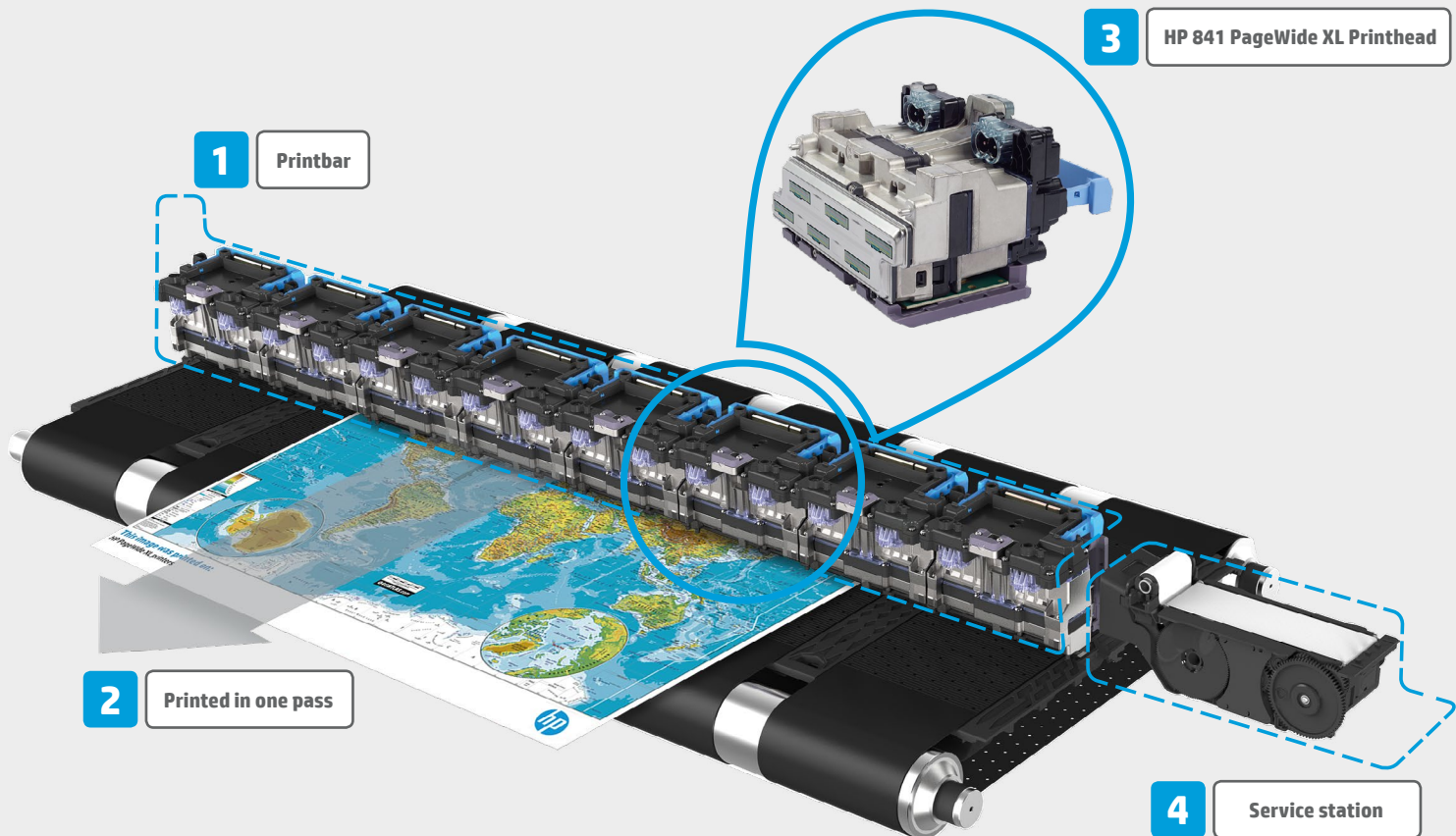
HP PageWide XL portfolio brochure

SAVINGS
ENTERPRISE
maps
Monochrome
Poster
smartstream
Print corner
tsetsat
Accelerate
PageWide XL
Repro houses
color
QUALITY
CAD color
Savings
MONOCHROME
TECHNOLOGY
Enterprise
Grow
QUALITY
GIS
FASTEST
Print corner
smartstream
Pigment ink
CRD
GIS
Repro houses
Speed
Posters
Large Format
chroma

1	HP PageWide Technology: quality and speed	3
2	Flexible solutions	4
	Enterprise	4
	Reprohouses	5
3	HP PageWide XL printer portfolio at a glance	6
	HP PageWide XL 8000 printer	8
	HP PageWide XL 5100 Printer series	10
	HP PageWide XL 4000 Printer series	12
4	HP SmartStream software	14
5	HP SmartTracker software	16
6	HP Click printing software	17
7	HP PageWide XL accessories	18
8	Applications	20
9	HP media offering for HP PageWide XL pigment inks	21
10	HP Certified Partner Solutions	22
11	HP PageWide XL printing and the environment	23
12	HP Financial Services solutions for HP PageWide XL printers	24
13	HP Support Services	25

1. HP PageWide Technology: quality and speed

With more than 5,000 units sold and 3 billion ft² (300 million m²) printed since the launch of HP PageWide XL printers in 2015, more customers are discovering the revolutionary nature of HP PageWide Technology and the value that HP PageWide XL printers bring to businesses across the globe.



Innovation in action

HP PageWide XL printers include a stationary 40-inch (101.6-cm) printbar (1) that spans the whole printing width. The entire page is printed in one pass (2), enabling very high printing speeds.

The printbar is built from 8 identical HP 841 PageWide XL Printhead modules (3) with the following characteristics:

- 5.08 inches (129 mm) per module
- 4 colors (cyan, magenta, yellow, black)
- 1200 nozzles per inch and per color

HP 841 PageWide XL Printheads provide reliable and long-life operation, with an average life per printhead of 32 liters of ink. Print quality and consistency is provided by a closed-loop system contained in the service station. (4)

The service station includes sensors that detect nozzle status and a densitometer used for color calibration and printhead alignment. All necessary corrections and cleanings are performed automatically.

To help maximize productivity, HP 841 PageWide XL Printheads and

HP PageWide XL pigment ink are specially designed to enable extended time between service station cycles of up to hundreds of pages.

Prints made with Original HP PageWide XL Pigment Inks can be stored up to 200-years in the dark¹ and have passed the rigorous ISO 11798 permanence and durability standard², withstanding exposure to light, water, abrasion, and handling.

2. Flexible solutions for different environments: Enterprise

Productivity is top of mind for many businesses—and especially enterprise users, such as architects and engineers, who want to optimize their time. Printing is part of their daily work, but they don't want to spend extra time printing or learning how to use printers.

Consolidate and simplify monochrome and color printing into one single intuitive device. Don't lose time and start seeing immediate results, no matter if you have long jobs or short runs. Enjoy a new technical document standard with crisp lines, fine detail with 2-point text, smooth grayscales, and vibrant colors.



Productivity

Accommodate production peaks and short run jobs with HP PageWide XL printers. Print up to 30 A1/D pages min (1500 A1/D pages/hr)—the fastest print speed in the market³. Get immediate results by getting the first page printed in up to 20 seconds with no warm-up time.

Print quality and versatility

Forget about the type of project you are printing. Produce a variety of high-quality jobs. HP PageWide XL pigment inks—ISO 11798 certified for long-term storage, light/water resistance. Communicate more effectively, and get prints right the first time.

Collaboration

Use our MFPs to effectively collaborate on projects and quickly share information. Ensure the best optical resolution with the 1200 dpi integrated scanner.

Unattended operation

Focus more on your work, and less on your printer. Dual HP ink supplies with auto-switch; up to 6 rolls; and remote monitoring mean less intervention during printing.

Ease of use

Don't lose time figuring out how to use your printer. Simplify with an intuitive printing solution, both hardware and software, from job preparation to finishing. Use HP SmartStream printing software for easy batch printing.

Integration in the office environment

Reduce space. Print/scan/copy in monochrome and color with one single device—in a fully HP branded, supported solution. Use one standard office plug that doesn't require special installation/extra cost. And ensure silent operation, key for shared office environments.

Security

Protect your business and your information with a range of security-enhancing features, such as self-encrypting HDD, Secure Disk Erase, IPsec, and PIN printing (available on HP PageWide XL 4000 printers and MFPs).

Low energy consumption

Designed with the environment in mind, HP PageWide XL has up to 10 times lower energy consumption than comparable LED printers.

Cost savings

Print monochrome, color technical documents faster at the same or lower cost than comparable LED printers.⁶

Flexible solutions for different environments: Reprohouses

Brochure | HP PageWide XL portfolio

Turn-around times are getting tighter, and reprohouses need to provide immediate results, regardless of long jobs or peaks in demand. They want to produce the best possible quality, while also offering a broad range of applications to satisfy different customer needs. And they want to do all of this while being as efficient and cost effective as possible.

Now you can meet aggressive deadlines with the fastest production printer for monochrome and color.³

Set a new technical document quality standard with crisp lines, fine detail with 2-point text, smooth grayscale, and vibrant colors. Grow your business by instantly printing up to 40-in CAD drawings, GIS maps, point-of-sale (POS) posters, that can be printed on both HP and third-party media.

Productivity

Meet tightest deadlines with HP PageWide XL printers. You can accommodate production peaks and jobs of any length with print speeds up to 30 A1/D pages min (1500 A1/D pages/hr)—the fastest in the market.

Print quality and versatility

Set a new technical document standard with crisp lines, fine detail with 2-point text, smooth grayscale, and vibrant colors. This solution is certified by ISO for long-term storage, and light/water resistance.⁴ Grow your business by offering a wide range of applications up to 40 in (101.6 cm), from GIS maps to point-of-sale (POS) posters that can be printed on both HP and third-party media. Take advantage of HP Certified Partner Solutions to help grow your possibilities.

Unattended operation

Reduce the amount of time operators spend maintaining this printer. We offer dual HP ink supplies with auto-switch capabilities and up to 6 rolls with up to 650 ft (200 m).

Space saving

With a single device that prints monochrome and color, you can save space and reduce complexity. There's one less printer to maintain and manage on the network. And you no longer need to manage two sets of printing supplies.

Streamlined workflow

Deliver mixed monochrome and color sets in 50% of the time with a consolidated workflow.⁷ Become two times more efficient⁸ with HP SmartStream software. And make the most out of production preflight and finishing solutions such as HP folders,

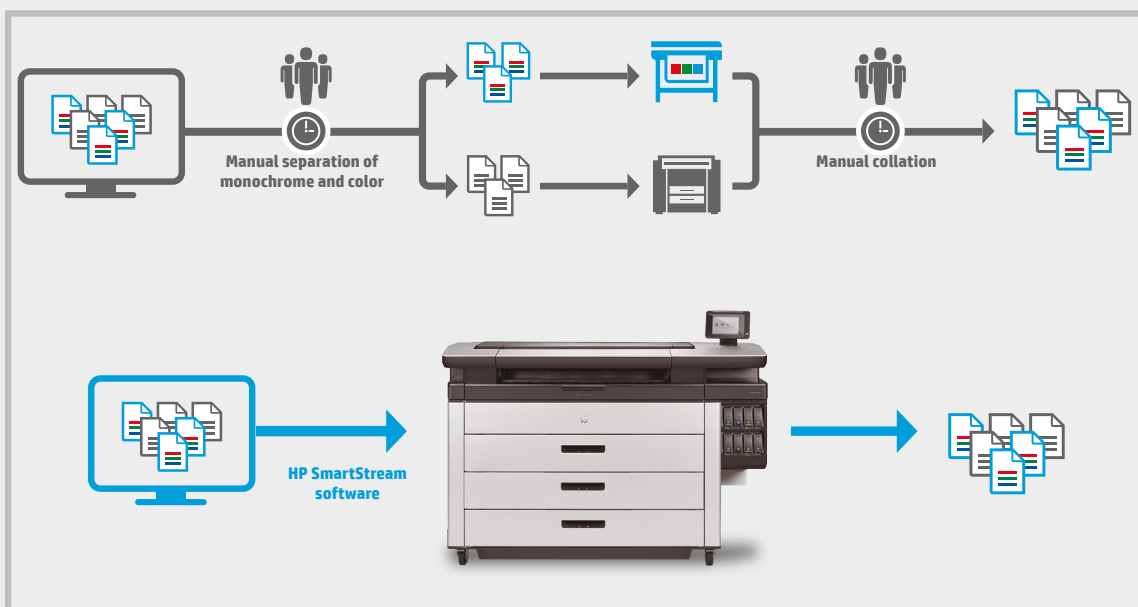
High-capacity stacker, and standalone scanners.

Total production cost reduction

Cut total production costs up to 50%. Gain broad control over your printing costs and turn them to your advantage with HP SmartTracker software. Print monochrome and color technical documents at the same or lower cost than comparable LED printers.

Low energy consumption

Designed with the environment in mind, you can experience up to 10 times lower energy consumption than comparable LED printers.



Stop manually separating monochrome and color pages from mixed sets, to afterwards send those separated pages to two different printers via two different types of job submission software. Only to manually collate those pages together again. Repro houses can save time and reduce complexity by consolidating monochrome and color workflows in one production environment.

3. HP PageWide XL portfolio at a glance



	HP PageWide XL 8000 Printer	HP PageWide XL 5100 Printer series	
	The fastest large-format monochrome and color printer ever, with up to 50% savings in total production costs ³	Instant monochrome and color printing—with up to 30% savings in total production costs ¹⁰	
	HP PageWide XL 8000 Printer	HP PageWide XL 5100 Multifunction Printer	HP PageWide XL 5100 Printer
Product number	L3A09A	2RQ20A	2RQ09J
Print speed (D/A1 pages/min)	Up to 30	Up to 20	Up to 20
Ink cartridges	775 ml Cyan, magenta, yellow, black; dual HP ink supplies with auto-switch	400 ml Cyan, magenta, yellow, black; dual HP ink supplies with auto-switch	400 ml Cyan, magenta, yellow, black; dual HP ink supplies with auto-switch
Print range	From A4 to A0 (A to E) Roll width 279 to 1016 mm (11 to 40 in)	From A4 to A0 (A to E) Roll width 279 to 1016 mm (11 to 40 in)	From A4 to A0 (A to E) Roll width 279 to 1016 mm (11 to 40 in)
Maximum number of rolls	Up to 6	Up to 4	Up to 4
Integrated 1200 dpi scanner	-	✓	-
Scanner speed	-	Color: up to 7.62 cm/sec (3 in/sec); Grayscale: up to 25.4 cm/sec (10 in/sec)	-
Paper output (standard)	Basket	Basket	Basket
Paper output (optional)	Folder, high-capacity stacker, and top stacker ¹¹	Folder, high-capacity stacker, and top stacker ¹¹	Folder, high-capacity stacker, and top stacker ¹¹
PostScript (standard)	Optional	Optional	Optional
Memory	16 GB DDR	16 GB DDR3	16 GB DDR3
Hard drive	1 x 128 GB SSD; 1 x 500 GB HDD, self-encrypted with AES-256	1 x 128 GB SSD; 1 x 500 GB HDD, self-encrypted with AES-256	1 x 128 GB SSD; 1 x 500 GB HDD, self-encrypted with AES-256
Secure Disk Erase	✓	✓	✓
Control panel access lock	✓	✓	✓
Personal identification number (PIN) printing	✓	✓	✓
API Netgard® MFD Smartcard security appliance for CAC, PIV, & CIV cards	✓	✓	✓
Celiveo®	✓	✓	✓



HP PageWide XL 4000 Printer series

**Do the work of two printers with
one—faster and lower cost than LED¹²**

HP PageWide XL 4000 Multifunction Printer	HP PageWide XL 4000 Printer
MOV02A	MOV01A
Up to 8	Up to 8
400 ml Cyan, magenta, yellow, black	400 ml Cyan, magenta, yellow, black
From A4 to A0 (A to E) Roll width 279 to 1016 mm (11 to 40 in)	From A4 to A0 (A to E) Roll width 279 to 1016 mm (11 to 40 in)
Up to 4	Up to 4
✓	-
Color: up to 7.62 cm/sec (3 in/sec); Grayscale: up to 25.4 cm/sec (10 in/sec)	-
Top stacker	Top stacker
F60 Folder and high-capacity stacker ¹¹	F60 Folder and high-capacity stacker ¹¹
Optional	Optional
8 GB DDR3	8 GB DDR3
1 x 500 GB HDD, self-encrypted with AES-256	1 x 500 GB HDD, self-encrypted with AES-256
✓	✓
✓	✓
✓	✓
✓	✓
✓	✓



HP PageWide XL 8000 Printer

The fastest large-format monochrome and color printer ever, with up to 50% savings in total production costs³



EXCEL

Meet the tightest deadlines

- Print up to 30 D/A1 pages/min (1 500 D/A1 pages/hr)—the fastest print speed in the market, even versus LED.³
- Deliver mixed monochrome and color sets in 50% of the time with a consolidated workflow.⁷
- Start printing in 50% of the time⁸—an ultra-fast processor, native PDF management, HP SmartStream software.
- Free up the operator—production stacker/online folder¹¹, up to 6 rolls, dual ink supplies with auto-switch.



EXPAND

Set the accurate, durable, color standard

- Help generate new business—print GIS map and point-of-sale (POS) poster applications at breakthrough speeds.
- Set a new technical document standard with crisp lines, 2-point text, smooth grayscales, and vibrant color.
- HP PageWide XL pigment inks—ISO certified for long-term storage, light/water resistance.⁴
- Print on HP and third-party media up to 101.6 cm/40 inches—covering ISO/US technical and offset standards.¹³



SAVE

Cut total production costs up to 50%³

- Print monochrome technical documents at the same or lower cost than comparable LED printers.¹⁴
- Print color technical documents at the lowest cost in the market.¹⁵
- Cut job preparation and finishing costs up to 50%.⁷
- See up to 10 times lower energy consumption than comparable LED printers.⁵



For more information, please visit:
hp.com/go/pagewidexl8000



Windows 10



POWERED BY

Adobe PDF Print Engine





Up to 6 rolls—automatic roll switching when a roll is depleted or a different page size is selected



Dual 775-ml HP ink supplies with auto-switch—replace used cartridges while the printer is running



Print up to 30 D/A1 pages/min (1500 D/A1 pages/hr)



High-capacity output solutions specially designed to keep up with HP PageWide XL print speeds (HP PageWide XL High-capacity Stacker and HP PageWide XL Folder¹¹)



203-mm (8-inch) touchscreen with status light that reports at-a-glance current status from a distance

Ordering information

Product	L3A09A	HP PageWide XL 8000 40-in Printer
Accessories	G6H50B	HP SD Pro 44-in Scanner
	G6H51B	HP HD Pro 42-in Scanner
	K5H75A	HP PageWide XL Folder
	L3M58A	HP PageWide XL Folder with Tab Applicator
	MOV04A	HP PageWide XL Folder Upgrade Kit for Long Plots
	CZ317A	HP PageWide XL PostScript/PDF Upgrade Kit
	CZ318A	HP PageWide XL Drawer
	CZ319A	HP PageWide High-capacity Stacker
	CZ320A	HP PageWide XL Top Stacker
	L3J69AAE	HP SmartStream Preflight Manager
	L3J69A	HP SmartStream Preflight Manager USB
	L3J72AAE	HP SmartStream Print Controller for HP PageWide XL 8000
	L3J72A	HP SmartStream Print Controller USB for HP PageWide XL 8000 Printer series
	T9B46AAE	HP SmartStream Print Controller for non-HP Large Format printers ¹⁷
	2NH46AAE	HP SmartStream Document Organizer Module
	2NH47AAE	HP SmartStream Pixel Analysis Module
	Z8J14AAE	HP SmartTracker for HP PageWide XL 8000 Printer
	Z8J14A	HP SmartTracker USB for HP PageWide XL 8000 Printer
Original HP PageWide XL printheads and consumables	C1Q19A	HP 841 PageWide XL Printhead
	F9J47A	HP 841 PageWide XL Cleaning Container
	F9J48A	HP 841 PageWide XL Maintenance Cartridge
Original HP PageWide XL ink cartridges	C1Q49A	HP 842B 775-ml Black PageWide XL Ink Cartridge
	C1Q50A	HP 842B 775-ml Cyan PageWide XL Ink Cartridge
	C1Q51A	HP 842B 775-ml Magenta PageWide XL Ink Cartridge
	C1Q52A	HP 842B 775-ml Yellow PageWide XL Ink Cartridge

HP PageWide XL 5100 Printer series

Instant monochrome and color printing—
with up to 30% savings in total production costs¹⁰



IMMEDIATE

Get instant monochrome and color prints

- Up to 20 D/A1 pages/minute print speed, quick 28-second first page out.
- Deliver mixed monochrome and color sets in 50% of the time with a consolidated workflow.⁷
- Start printing in 50% of the time⁸—an ultra-fast processor, native PDF management, HP SmartStream software.
- Print unattended—production preflight/finishing solutions, up to 4 rolls, dual 400-ml inks with auto-switch.



EXPAND

Set the accurate, durable, color standard

- Set a new technical document standard with crisp lines, 2-point text, smooth grayscales, and vibrant color.
- Help generate new business—reveal the value of color; print GIS maps, point-of-sale posters, and more.
- HP PageWide XL pigment inks—ISO certified for long-term storage, light/water resistance.⁴
- Print on HP and third-party media up to 101.6 cm/40 inches—covering ISO/US technical and offset standards.¹³



SAVE

Cut total production costs up to 30%¹⁰

- Print monochrome and color technical documents at the same or lower cost than comparable LED printers.¹⁶
- Print/scan/copy in monochrome and color with one single device—in a fully HP branded, supported solution.
- Gain broad control over your printing costs and turn them to your advantage with HP SmartTracker software.
- Help keep data safe—self-encrypting HDD with AES-256, Secure Disk Erase, and IPsec.



For more information, please visit:
hp.com/go/pagewidexl/5100series



POWERED BY
Adobe PDF Print Engine





Up to 4 rolls—automatic roll switching when a roll is depleted or a different page size is selected



Dual 400-ml HP ink supplies with auto-switch—replace used cartridges while the printer is running



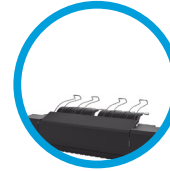
Print up to 20 D/A1 pages/minute, quick 28-second first page out



High-capacity output solutions specially designed to keep up with HP PageWide XL print speeds (HP PageWide XL High-capacity Stacker and HP PageWide XL Folder¹¹)



Top stacker designed to save space; with a capacity of up to 100 pages



Integrated 1200 dpi scanner—scan at speeds up to 7.62 cm/sec (3 in/sec) in color and 25.4 cm/sec (10 in/sec) in grayscale (only available with the HP PageWide XL 5100 Multifunction Printer)



203-mm (8-inch) touchscreen with status light that reports at-a-glance current status from a distance



Ordering information

Product	2RQ20A	HP PageWide XL 5100 40-in Multifunction Printer
	2RQ09J	HP PageWide XL 5100 40-in Printer
Accessories	CZ317A	HP PageWide XL PostScript/PDF Upgrade Kit
	CZ318A	HP PageWide XL Drawer
	CZ319A	HP PageWide XL High-capacity Stacker
	CZ320A	HP PageWide XL Top Stacker
	G6H50B	HP SD 44-in Pro Scanner
	G6H51B	HP HD 42-in Pro Scanner
	K5H75A	HP PageWide XL Folder
	L3M58A	HP PageWide XL Folder with Tab Applicator
	M0V04A	HP PageWide XL Folder Upgrade Kit for Long Plots
	1EW99A	HP F60 Folder
	1EX00A	HP F60 Folder with Tab Applicator
	L3J69AAE	HP SmartStream Preflight Manager
	L3J69A	HP SmartStream Preflight Manager USB
	L3J74AAE	HP SmartStream Print Controller for HP PageWide XL 5000/5100 Printer series
	L3J74A	HP SmartStream Print Controller USB for HP PageWide XL 5000/5100 Printer series
	T9B46AAE	HP SmartStream Print Controller for non-HP Large Format printers ¹⁷
	2NH46AAE	HP SmartStream Document Organizer Module
	2NH47AAE	HP SmartStream Pixel Analysis Module
	Z8J16AAE	HP SmartTracker for HP PageWide XL 5000/5100 Printer series
	Z8J16A	HP SmartTracker USB for HP PageWide XL 5000/5100 Printer series
Original HP PageWide XL printheads and consumables	C1Q19A	HP 841 PageWide XL Printhead
	F9J47A	HP 841 PageWide XL Cleaning Container
	F9J48A	HP 841 PageWide XL Maintenance Cartridge
Original HP PageWide XL ink cartridges	C1Q61A	HP 843B 400-ml Black PageWide XL Ink Cartridge
	C1Q62A	HP 843B 400-ml Cyan PageWide XL Ink Cartridge
	C1Q63A	HP 843B 400-ml Magenta PageWide XL Ink Cartridge
	C1Q64A	HP 843B 400-ml Yellow PageWide XL Ink Cartridge

HP PageWide XL 4000 Printer series

Do the work of two printers with one—faster
and lower cost than LED³



FASTER

Monochrome and color, faster than LED³

- Move projects forward—up to 8 D/A1 pgs/min monochrome and color, quick 30-second first page out.
- Print, scan, copy in a single device—integrated 1200 dpi scanner with advanced and convenient workflows.
- It's simple—a single, easy-to-use device that meets all your printing and scanning needs.
- Focus on your project, not the printer—up to 4 rolls with 100-page integrated top stacker.



SAVE

Better document quality vs LED, lower cost³

- Run at lower costs than low-volume LED³—in monochrome and color.
- Accurately track your printing costs using HP SmartTracker
- Produce excellent technical documents—crisp lines, fine detail, smooth grayscales that beat LED.⁸
- HP PageWide XL pigment ink for dark blacks, vivid colors, moisture/fade resistance—even on uncoated bond.¹



SECURE

Help keep data safe, meet IT standards

- Get a range of strict security features—self-encrypting HDD, Secure Disk Erase, IPsec, and PIN printing.
- Reduce time and costs of managing individual drivers by using HP DesignJet Universal Print Driver.
- Control your printer fleet with HP Web Jetadmin, monitor your device remotely with the HP Embedded Web Server.
- Streamline your print workflow with HP SmartStream software, print easily with HP Click submission tool.²⁵



For more information, please visit:
hp.com/go/pagewidexl/4000series



Windows 10



POWERED BY

Adobe PDF Print Engine

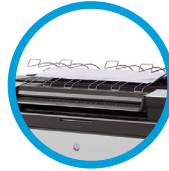




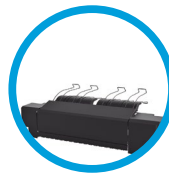
Up to 4 rolls—automatic roll switching when a roll is depleted or a different page size is selected



400-ml HP ink supplies



Print up to 8 D/A1 pages/minute, quick 30-second first page out



Top stacker designed to save space and allows the printer to be placed against a wall; capacity up to 100 pages



Integrated 1200 dpi scanner—scan at speeds up to 7.62 cm/sec (3 in/sec) in color and 25.4 cm/sec (10 in/sec) in grayscale (only available with the HP PageWide XL 4000 Multifunction Printers)



8-inch (203-mm) touchscreen with status light that reports at-a-glance current status from a distance

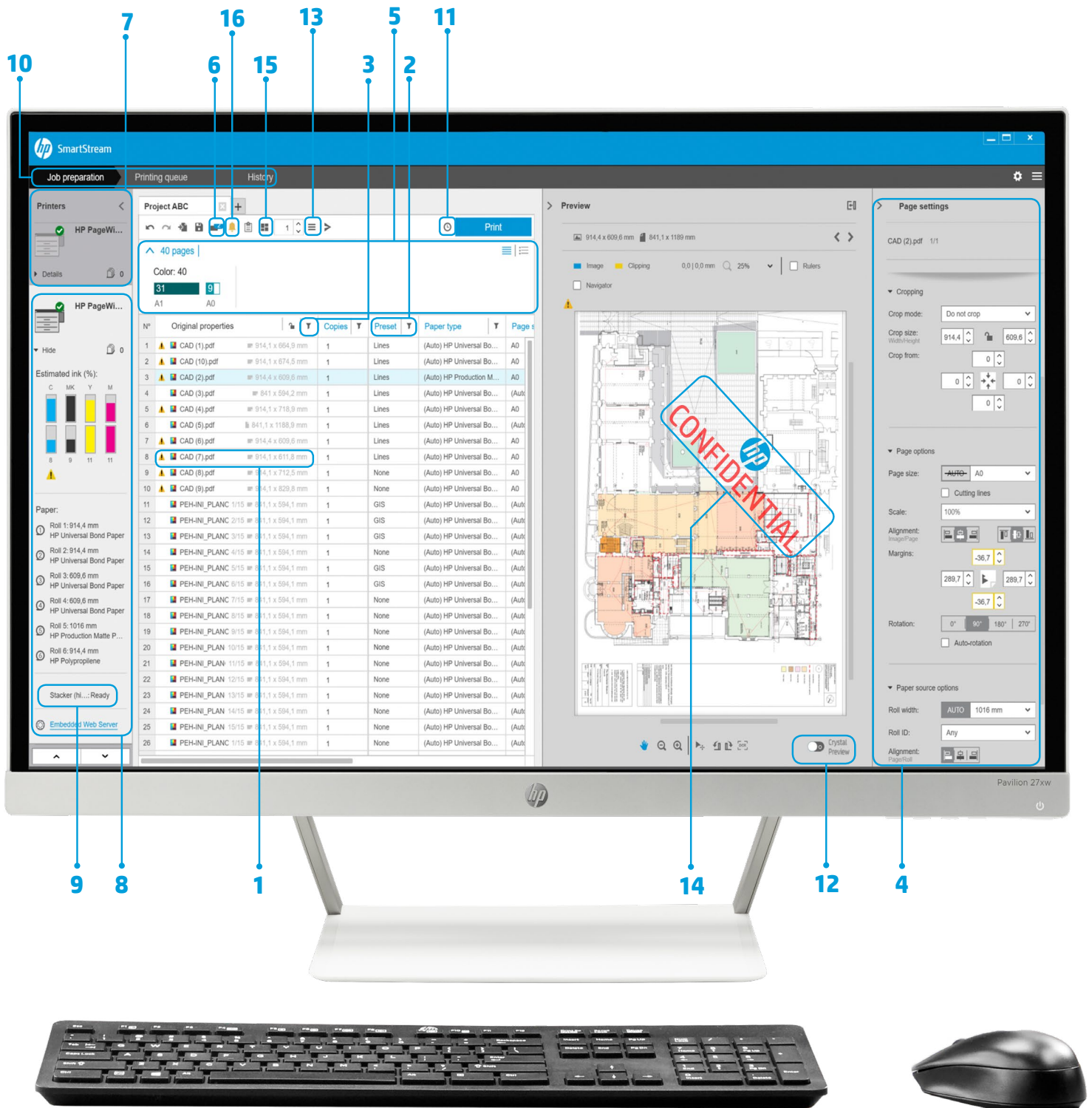


Ordering information

Product	MOV02A MOV01A	HP PageWide XL 4000 40-in Multifunction Printer HP PageWide XL 4000 40-in Printer
Accessories	CZ317A CZ318A 1AT07B G6H50B G6H51B 1EW99A 1EX00A K5H73A L3J69A L3J69AAE L3J76AAE L3J76A T9B46AAE 2NH46AAE 2NH47AAE Z8J18AAE Z8J18A	HP PageWide XL PostScript/PDF Upgrade Kit HP PageWide XL Drawer HP PageWide XL 4000/4500 Accessory Upgrade Kit HP SD Pro 44-in Scanner HP HD Pro 42-in Scanner HP F60 Folder ¹⁰ HP F60 Folder with Tab Applicator ¹⁰ HP PageWide XL 4000 Speed Upgrade Kit HP SmartStream Preflight Manager USB HP SmartStream Preflight Manager HP SmartStream Print Controller for HP PageWide XL 4000 HP SmartStream Print Controller USB for HP PageWide XL 4000 Printer Series HP SmartStream Print Controller for non-HP Large Format printers ¹⁷ HP SmartStream Document Organizer Module HP SmartStream Pixel Analysis Module HP SmartTracker for HP PageWide XL 4000 Printer HP SmartTracker USB for HP PageWide XL 4000 Series
Original HP PageWide XL printheads and consumables	C1Q19A F9J47A F9J48A	HP 841 PageWide XL Printhead HP 841 PageWide XL Cleaning Container HP 841 PageWide XL Maintenance Cartridge
Original HP PageWide XL ink cartridges	C1Q61A C1Q62A C1Q63A C1Q64A	HP 843B 400-ml Black PageWide XL Ink Cartridge HP 843B 400-ml Cyan PageWide XL Ink Cartridge HP 843B 400-ml Magenta PageWide XL Ink Cartridge HP 843B 400-ml Yellow PageWide XL Ink Cartridge

4. HP SmartStream software for HP PageWide XL and HP DesignJet printers

Your large-format production workflow—two
times more efficient⁸



SPEED

Do jobs in 50% of the time⁸

- Meet the tightest deadlines with ultra-fast HP SmartStream Preflight Manager file analysis and processing
- Reduce reprints—rely on native PDF management with Adobe PDF Print Engine 4²¹
- Stop changing settings one by one—create presets to bundle all desired settings, then reuse as needed
- Stay productive with an easy and intuitive user interface

EFFICIENCY

Streamline your production workflow

- Easily distribute the HP SmartStream configuration into different workstations—presets, hot folders, printers
- Make sure files are produced reliably with the automatic detection of potential issues
- Manage your HP PageWide XL, HP DesignJet production printers, and non-HP large-format printers²²
- Run HP accessories, including online folders, stackers, and standalone scanners

GROWTH

Expand with color production

- Efficiently produce all your GIS maps and point-of-sale (POS) poster applications on HP PageWide XL printers
- Preview color just as it will print, and adjust settings with interactive HP Crystal Preview Technology
- Get the most out of your media with nesting designed to minimize paper waste
- Get accurate data for invoicing—job report summary even includes pixel coverage



SPEED

Finish jobs in 50% of the time⁸

1. Paper size and type (color or monochrome) automatically detected
2. Save settings into a preset and apply them when needed
3. Filtering and sorting option, and extract feature—multipage job management
4. Adjust all your printing settings per page, file, or job
5. Use the classification of pages by size and color to apply settings or to (re)move them—simplify production of large job



EFFICIENCY

Enhance your production workflow

6. Submit Jobs to HP SmartStream or directly to print through shared hot folders
7. Multi-printer support—HP PageWide XL, HP DesignJet production printers, and non-HP large-format printers²²
8. Detailed information about printer status, ink level, loaded media, and pages in the queue to be printed
9. Production accessories integration—online folders, stackers, and scanners
10. Keep track of the status of your job through the Printing queue and Job history panel; Job history allows you to easily make reprints
11. Prepare prints and put them on hold for release at a later time



GROWTH

Expand with color production

12. HP Crystal Preview Technology—preview color just as it will print
13. Get accurate data for invoicing and check if files are printed correctly with the job summary data that can be included in the job separator page
14. Add text or image stamps to jobs and save them as templates to reuse when needed
15. Help cut media costs with automatic nesting
16. Resolution center—automatic detection of potential PDF and layout issues

Enhance specific printing workflows with optional HP SmartStream modules

Document Organizer Module enables you to rename files, create different versions of files, and reorder pages in HP SmartStream, saving time by up to 70%.²³

Innovative OCR technology helps you automatically rename large sets of files with minimum effort while avoiding mistakes.

Pixel Analysis Module allows you to provide accurate quotes to customers before printing. The tool will examine the pixel coverage of jobs before printing—including the mono and color coverage—and provide you with an accurate estimation of job and page prices. Minimize charging mistakes and save valuable time.

Note: HP SmartStream software supports the following printers: HP PageWide XL 8000 Printer, HP PageWide XL 5100 Printer series, HP PageWide XL 4000 Printer series, HP DesignJet T3500 Production MFP, HP DesignJet T7100/T7200 Production Printers, HP DesignJet Z6600 Production Printer, and HP DesignJet Z6200/Z6800 Photo Production Printers.

For more information, please visit:
hp.com/go/smartstreampagewidexl
hp.com/go/smartstreamdesignjet

5. HP SmartTracker software

Gain broad control over your printing costs
and turn them to your advantage

HP SmartTracker is a powerful, consolidated data tracking and reporting software that helps you analyze your printing costs, and enables reimbursement.²⁴ You can be assured all your print jobs are assigned correctly—while saving time. HP SmartTracker software is only compatible with Original HP ink supplies.

Consistent and accurate job assignment

- Avoid manual data entry and easily merge data from HP SmartStream/HP Click/driver/front panel/MFP²⁴
- Assign jobs by print user, project, and department, or edit the categories to fit your workflow
- Get secure print job assignment, with optional password-protected categories that help prevent errors
- Consolidate tracking and reporting data across multiple HP PageWide XL printers
- Get the complete detail—you can access the source data on a per-page basis

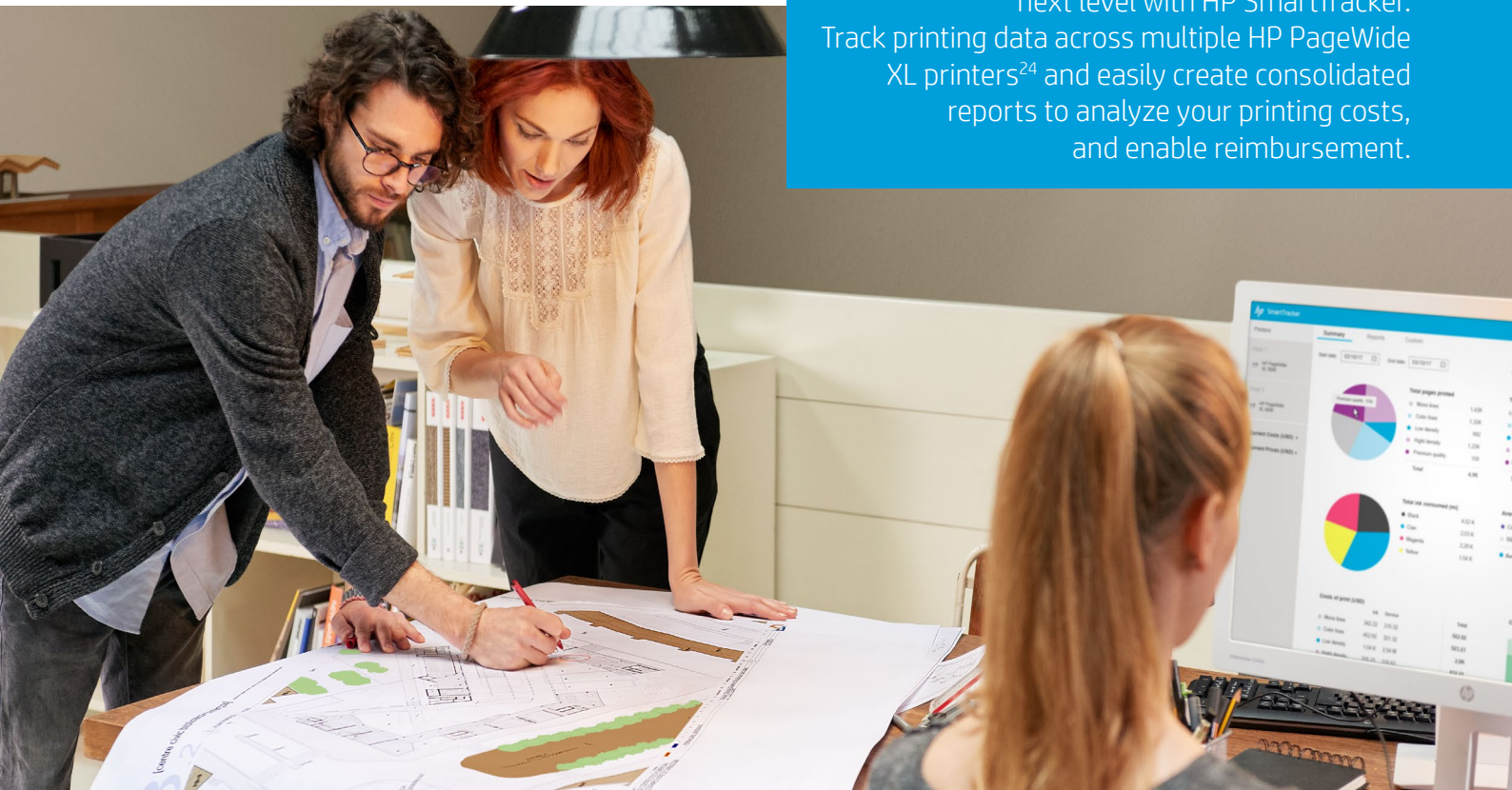
Take control, and easily integrate

- Generate/schedule easy-to-read reports—use the default templates or customize them to your preferences
- Save time—create invoice-format reports including your company logo
- Free up time—integrate with your current accounting software by easily importing or exporting .csv files
- Keep track and compare both print costs and reimbursement fees, at the same time

For more information and to download
the trial version please visit
hp.com/go/smarttrackerpagewidexl
hp.com/go/smarttrackerpagewidexl/software

Convert your printing costs into your advantage

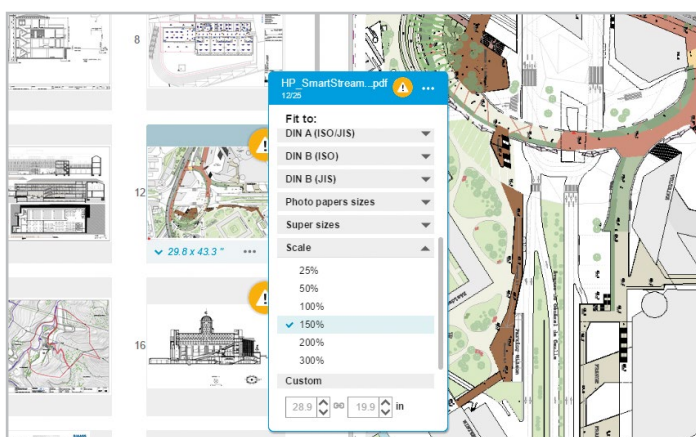
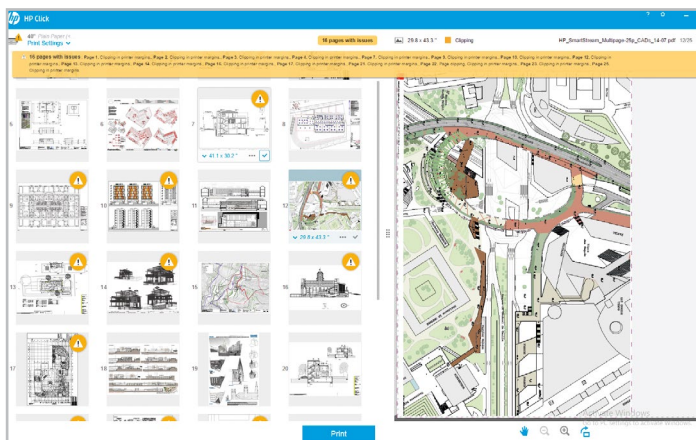
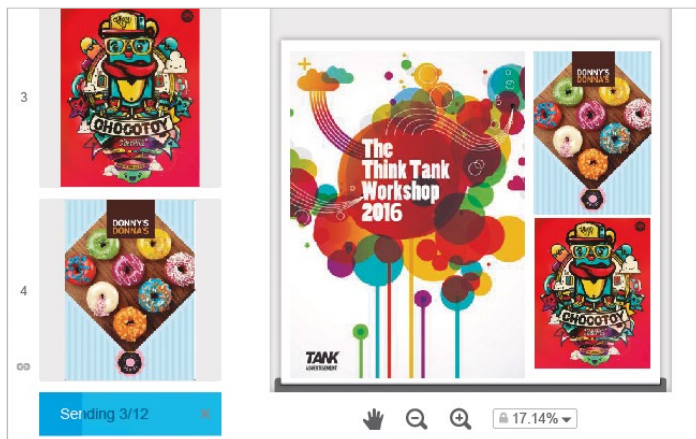
Take your business to the next level with HP SmartTracker. Track printing data across multiple HP PageWide XL printers²⁴ and easily create consolidated reports to analyze your printing costs, and enable reimbursement.



6. HP Click printing software

Radically simple printing experience for the HP PageWide XL 4000 Printer series²⁵

With one click,²⁶ print the most common formats like PDF, JPEG, TIFF, HP-GL/2 files from a PC or Mac. Produce a wide range of applications. Automatic features optimize media usage, costs.



EASY

Radically simple printing

- Enables one-click printing²⁶
 - Simple settings
 - Real-print preview
- Drag and drop multipage PDF



SAVE

Optimize media usage and costs

- Auto-orientation
- Resizing and alignment
 - Automatic nesting
 - PDF error check



DO MORE

Produce a wide range of applications

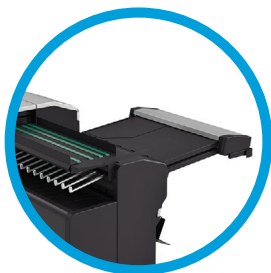
- From posters and roll-up banners to CAD drawings and maps
- Print from Windows, Mac OS to HP PageWide XL 4000 Printer series²⁵

For more information, please visit:
hp.com/go/clickpagewidexl

7. HP PageWide XL accessories

Finishing

HP PageWide XL accessories help free up resources and increase your productivity, from the online folder to stackers and scanning and copying options



1. HP PageWide XL Folder¹¹

High-productivity online folding for HP PageWide XL 8000 Printer, and the HP PageWide XL 5100 Printer series.

Full online integration

- Control the folder and folding styles from HP SmartStream software, the driver, the scanner, or the printer touchscreen
- Bi-directional communication between the printer and the folder enables reliable operation
- Monitor folder status from the printer or the HP SmartStream software; the job queue halts when the folder has stopped

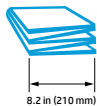
High speed

- The HP PageWide XL Folder is designed to match the breakthrough productivity of HP PageWide XL printers
- Stack up to 150 E/A0-size folded packages

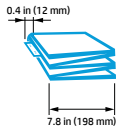
Versatility

- Opt for the standard HP PageWide XL Folder or for the HP PageWide XL Folder with Tab Applicator if you need to apply reinforcement strips to your documents
- Fold up to 914 mm (36 in) in width and up to 2.5 m (8.2 ft) in length for fully folded packages; fan fold up to 6 m (19.7 ft) in length; add the HP PageWide XL Folder Upgrade Kit for Long Plots for unlimited length fan folding
- Choose from pre-defined folding programs or create your custom folding styles
- Supports DIN, AFNOR, ANSI, and US folding standards

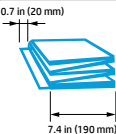
Product	K5H75A	HP PageWide XL Folder
	L3M58A	HP PageWide XL Folder with Tab Applicator
	MOV04A	HP PageWide XL Folder Upgrade Kit for Long Plots
	1EW99A	HP F60 Folder
	1EX00A	HP F60 Folder with Tab Applicator



Standard folding packages



Standard folding packages with reinforcement strips



Standard folding packages with binding edge



2. HP PageWide XL High-capacity Stacker¹¹

Compatible with the HP PageWide XL 8000 Printer, and the HP PageWide XL 5100 and 4000 Printer series, the HP PageWide XL High-capacity Stacker has a maximum input width of 1016 mm (40 inches).

Product	CZ319A	HP PageWide XL High-capacity Stacker
---------	--------	--------------------------------------



3. HP PageWide XL Top Stacker¹¹

The top stacker is designed to save space and allows the printer to be placed against a wall. Provides capacity up to 100 pages.

Product	CZ320A	HP PageWide XL Top Stacker
---------	--------	----------------------------

HP PageWide XL accessories

Scanning and copying

1. HP Pro Scanner series

Optimized for HP PageWide XL and HP DesignJet printers the HP Pro Scanner series offers ultra-fast processing speeds with an Intel Core i7 processor and high scan speeds²⁷ up to 150-mm/sec (6-inches/sec) color and up to 330-mm/sec (13-inches/sec) black and white.

- The **HP HD Pro 42-in Scanner** delivers exceptional, high-quality results with 1200 dpi optical resolution. Reproduce everything from technical documents to graphics—even old, delicate, or damaged originals—up to 15-mm (0.6-inches) thick with CCD technology.

- The **HP SD Pro 44-in Scanner** helps boost production with accurate color scanning—crisp lines and fine detail—delivered in high speed. Reproduce AEC/CAD drawings, blueprints, and maps using CIS scanning technology.

Boost your productivity when scanning/copying large projects with the HP Pro Scanner Output Tray

Increase productivity by enabling the operator to prepare one sheet while another is being scanned and collected.

Compatible with HP HD and SD Pro scanners. Supports large format originals up to A0/ARCH E.

Ordering information

Product	G6H50B	HP SD Pro 44-in Scanner
	G6H51B	HP HD Pro 42-in Scanner
Accessories	P7V13A	HP Pro Scanner Output Tray

2. Print/scan/copy with a multifunction printer

Print, scan, and copy in a single device. The integrated 1200 dpi 914 mm (36-in) color scanner provides advanced and convenient workflows.



8. Applications

Take on new, creative applications with extensive media support

Set a new standard for technical document quality, produce more color jobs

- Crisp lines, fine detail with 2-point text, smooth grayscales, dark blacks, and vibrant colors.
- HP PageWide XL pigment inks, ISO 11798 certified for long-term storage, light/water resistance.⁴

Grow your application options with HP PageWide XL printing solutions

HP PageWide XL printing is proven to deliver high productivity, fast mono and color printing, and reduced costs.

But you can also use HP PageWide Technology to produce an ever-expanding range of applications—taking your business into new creative realms.

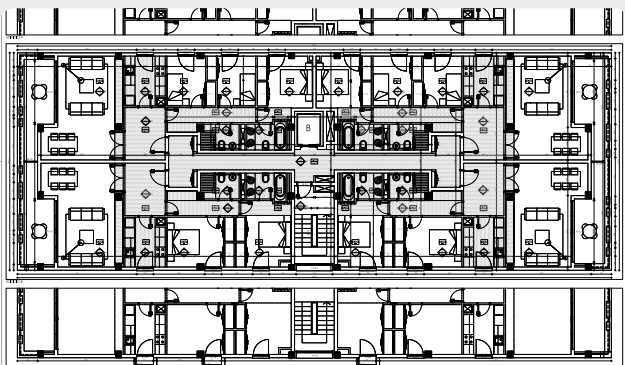
HP PageWide XL printers and MFPs support a broad range of media from coated and uncoated stock all the way to fluorescents, self-adhesives, and more.

Stretch your imagination and make HP PageWide XL the go-to technology for all of your printing needs.

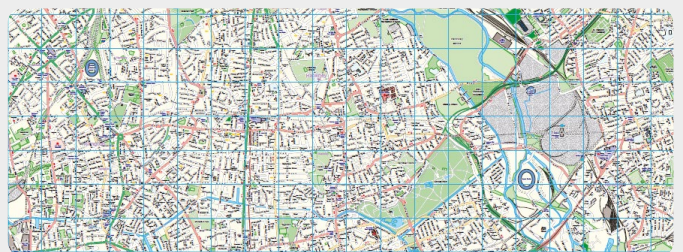
“Many of our customers now print documents themselves and don’t require as much printing as they used to, so we’ve increasingly moved into color and display work. With demand for color technical documents increasing, finding the right color printer for our shop was a priority.”

Chuck Wingard, President of Tree Towns Imaging & Color Graphics

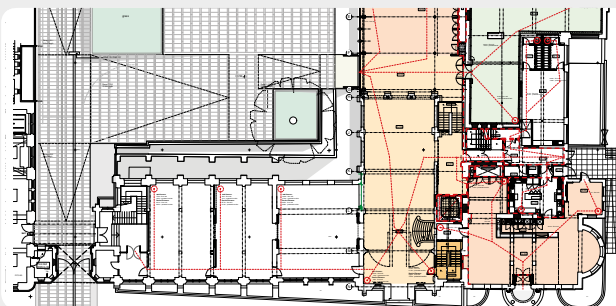
Black-and-white line drawings



Maps



Color drawings



Posters and roll-up banners



9. HP media offering HP PageWide XL pigment inks

HP PageWide XL printing materials are designed to perform with the breakthrough technology provided by HP PageWide XL printers. The technological advances of HP PageWide XL printing require special ink formulations and strictly controlled interactions between HP PageWide XL pigment inks and the paper to achieve high-quality printing in a single pass. Because the paper moves and the printhead doesn't, these printing materials have been designed to achieve the precise control of paper motion needed for superb results:

- Optimized with HP PageWide XL printers and pigment inks for high-quality printing
- Less ink with increased color on HP bond papers with ColorPRO Technology

- Cost-effective for everyday use in high-production environments
- Fade resistance and quick-dry time
- Recyclable²⁸ and FSC®-certified papers²⁹

HP bond papers with ColorPRO Technology for HP PageWide Technology—use 13.5% less ink and provide up to 60% more color than standard bond papers,³⁰ making these papers a highly cost-effective solution:

- HP 20-lb Bond with ColorPRO Technology, 3-in Core (75 g/m²)
- HP 24-lb Bond with ColorPRO Technology, 3-in Core (90 g/m²)
- HP Universal Bond Paper, 3-in Core (80 g/m²)
- HP Premium Bond Paper, 3-in Core (120 g/m²)
- HP Bright White Inkjet Paper, 3-in Core (90 g/m²)

HP PageWide XL printing materials:

- HP Universal Coated Paper, 3-in Core (90 g/m²)
- HP Universal Heavyweight Coated Paper, 3-in Core (131 g/m²)
- HP Production Matte Poster Paper, 3-in Core (160 g/m²)
- HP Production Satin Poster Paper, 3-in Core (160 g/m²)
- HP Gloss Poster Paper, 3-in Core (190 g/m²)
- HP Matte Polypropylene, 3-in Core (100 g/m²)

Find the HP or third party media solution that fits your business and your HP PageWide XL printer at

hp.com/go/mediasolutionslocator

For more information on HP large format printing materials, please
HPLFmedia.com



10. HP Certified Partner Solutions



Production workflows

Manage multiple large-format printers, scanners, and finishing devices from a variety of manufacturers from a single workflow. Receive jobs from both local and remote clients. Preview jobs, manage and convert file formats, and define job settings from a single user interface. Optimize media usage through nesting, and apply stamps and watermarks to printed output.

Certified raster image processors

HP has certified a number of third-party Raster Image Processors (RIPs), enabling additional control over elements such as color management, ICC profile management, tiling and nesting, support of multiple printers, and optimization of PANTONE® and spot color.

Cost recovery and allocation

Track large-format print volumes so that print, scan, and copy costs can be allocated to the correct department, project, or end user.

Fleet management

Remotely monitor fleets of large-format printers and track usage for more accurate and timely invoicing. Manage devices remotely, and get notifications when consumables are running low and are ready for automatic replenishment. Proactively manage device service needs to help ensure maximum uptime.

Secure scan, copy, and print release

Lock down your large-format MFPs and printers so that only authorized users who authenticate themselves via a PIN code or Security Card can use the devices. Meet HSPD-12 Department of Defense compliance requirements.

Collaboration

Streamline project management by easily scanning, printing, and sharing drawings with your partners and clients anywhere in the world via cloud collaboration technology. Capture and share ideas in real time.

Output management software

Distribute engineering drawings across your enterprise and print them on large-format printers from multiple manufacturers.

Take input from multiple CAD applications, Product Data Management, ERP, and Archive Systems. Manage multiple file formats (PDF, TIFF, HPGL, CGM, DOC, XLS, DWG, JPEG, TXT, SAPGOF).

To view compatibility, please visit
hp.com/go/pagewidexl3rdparty



11. HP PageWide XL printing and the environment

A better choice for the office—and the environment

HP PageWide XL printers are the latest in a long line of innovative HP products designed under the umbrella of our Design for Environment (DfE) program. DfE is an engineering perspective that seeks to develop innovative products that can help customers decrease the overall environmental impact of printing. Unlike LED technology, HP PageWide Technology operates without a fuser, reducing heat and noise generated—and producing no ozone.³¹ HP PageWide XL printers can be seamlessly integrated into the workplace with typical ventilation.³²

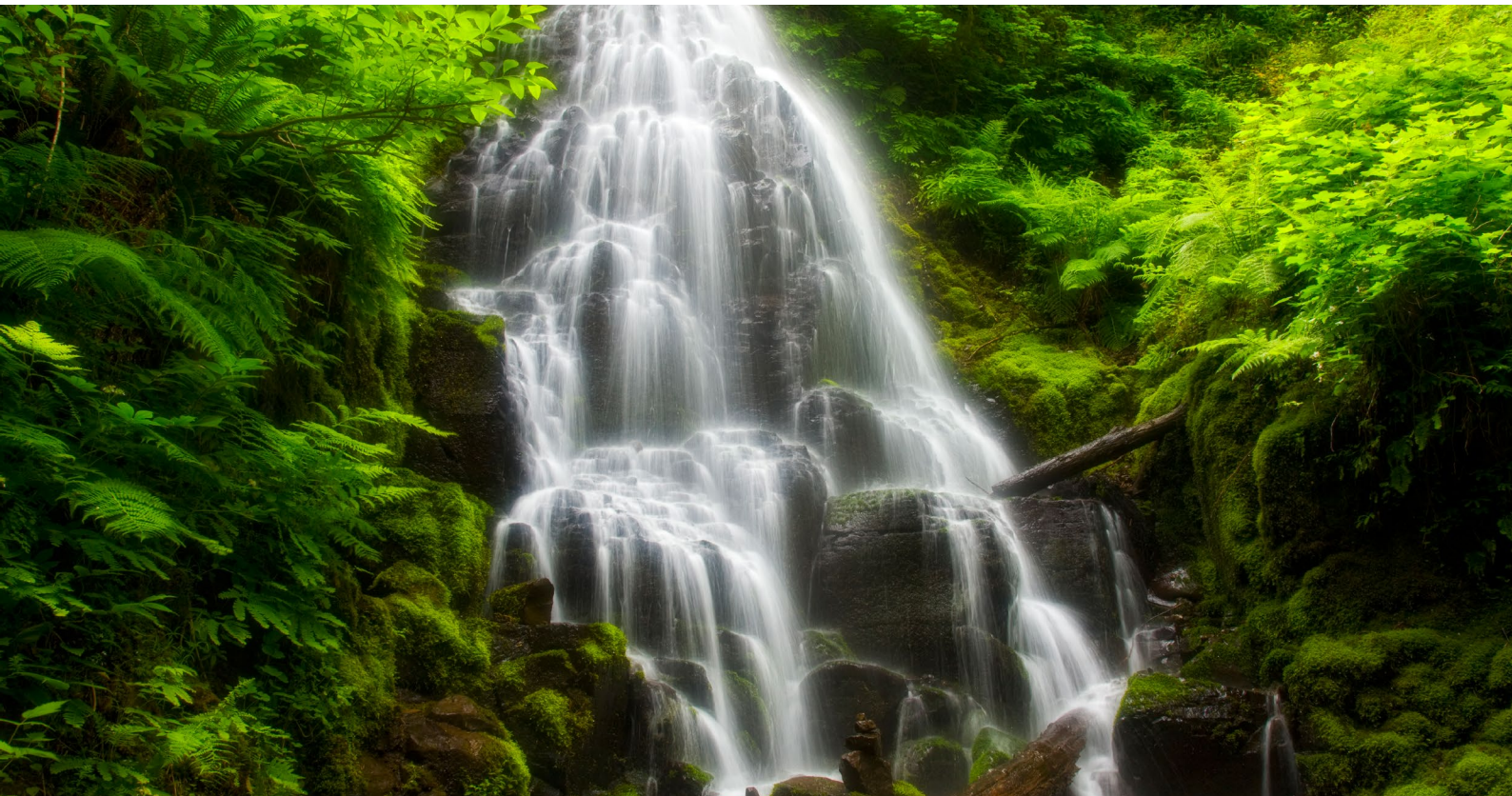
HP PageWide XL printers have also earned a number of leading environmental credentials including ENERGY STAR® certification for superior energy efficiency, and EPEAT Silver registration,³³ assessing environmentally preferable products that meet rigorous criteria across the complete product life cycle (from materials restriction to packaging and air quality).

In addition, HP PageWide XL ink cartridges can be used as a controlled product by a Nordic Ecolabelling printing company when Ecolabelling printed matter and applying or updating a Nordic Ecolabelling license. And all HP PageWide XL ink cartridges can be returned through the free, convenient HP Planet Partners recycling program.³⁴

HP PageWide XL printers are a great choice to help your business achieve your environmental goals—without forfeiting performance.



For more information, please visit:
hp.com/go/environment



12. HP Financial Services solutions for HP PageWide XL printers

Accelerate print innovation with investment solutions for HP PageWide XL printers



HP Financial Services can help make it easier for you to transition from old printers and deploy a new HP PageWide XL solution. Choose an investment solution that helps you avoid making a large, up-front cash outlay and provides a monthly payment plan that aligns your IT and financial goals. You can save 10% – 15% over 4 years compared to a cash purchase.³⁵

- Ease into your deployment with the option to defer payments for up to 60 days
- Start with lower payments as you ramp up production and productivity, and increase payments in steps over 6 or 12 months with a 60-month term
- Recycling services are done in accordance with applicable environmental regulations

You have the flexibility to add-on or expand as your business grows, and at the end of your chosen term, we make it simple for you to refresh and renew to the next generation of HP PageWide XL printers. You no longer have to hold on to your printers for a long period, waiting for them to fully depreciate. You can cost effectively keep your business in a position to grow and improve with the most advanced printing technology.

For more information, please visit the Programs and Promotions section on hp.com/hpfinancialservices

13. HP Support Services

Enjoy best-in-class support that works for your business

Focus on your core business and work confidently, knowing that your HP PageWide XL solution support requirements will be expertly met.

Rely on proven HP PageWide Technology³⁶

Get the most out of HP PageWide Technology, successfully deployed since 2006, for best-in-class reliability and printing performance. HP 841 PageWide XL Printheads are reliable and long lasting, and easy self-maintenance routines enable you to keep the printheads in top condition for ongoing, high-quality printing.

Enjoy innovative, automated support

Employing an array of internal sensors and built-in algorithms, your HP PageWide XL printer proactively self-monitors its health condition. It evaluates the data to predict maintenance requirements and even potential failures, and automatically alerts you and your support provider.

With advance warning, your support provider can plan the printer maintenance and support procedures to avoid unexpected downtime, and schedule maintenance tasks to most conveniently suit your work priorities.

Advanced diagnostics

When a printer issue occurs, internal sensors detect the root cause and an automated diagnostic process identifies the most likely resolution path for your support provider to follow. This helps your support provider respond quickly and efficiently to address printer problems using the latest technical knowledge and the right spare parts.

Trust reliable support setup

To help ensure your business can seamlessly transition to high-speed color inkjet printing, HP has thoroughly trained and certified support professionals at HP PageWide Channel Partners to provide complete solution installation and user training. Partners also provide maintenance and support as specified in your service contract. HP continues to support its partners, empowering them to deliver outstanding and effective service to you.

Depending on the country, HP offers Contractual services, Care Pack services, or both. For more information, please contact your reseller. For an HP Care Pack, please visit: hp.com/go/carepackcentral

Learn more at:

hp.com/go/pagewidexlservice



1. Wilhelm Imaging Research, Inc. dark storage ratings of Original HP ink systems on plain papers wilhelm-research.com/hp/WIR-HP_OfficeJet_Platin_Paper_Print_Permanence_2017-05-27.pdf
2. RiSE Research Institutes of Sweden AB ISO 11798 certificate number 450436 and 450439 HYPERLINK www.ri.se
3. Fastest based on internal HP testing and methodology compared to alternatives for large-format printing of technical documents, GIS maps, and point-of-sale (POS) posters under \$200,000 USD as of March, 2015. Production costs savings based on comparison to a setup consisting of one monochrome LED printer and one color production printer, both under \$150,000 USD, as of April, 2015. Production costs consist of supplies and service costs, printer energy costs, and operator costs. For testing criteria, see hp.com/go/pagewidexlclaims.
4. HP PageWide XL pigment inks are certified per the ISO 11798 Permanence and Durability standard, proving that prints made with HP PageWide XL printers using Original HP PageWide XL pigment inks withstand harsh exposure to light, water, abrasion, and handling, and long-term storage and heat, and remain legible in the future. For more information, see hp.com/go/printpermanence.
5. Conclusions based on internal HP testing for a specific use scenario. Comparable printers using LED technology based on LED printers capable of printing 18 to 22 D/A1 pages per minute and which represent more than 80% of the share of high-volume LED printers in the US and Europe according to IDC as of April, 2015. For testing criteria, see hp.com/go/pagewidexlclaims.
6. Based on supplies and service costs. Monochrome technical document printing costs for comparable mid-volume LED printers based on printers for large-format printing of technical documents at speeds between 8 and 13 D/A1 per minute as of July, 2017 which represent more than 80% of the share of mid-volume LED printers in the US and Europe in 2017 according to IDC. Color technical document printing costs for comparable mid-volume color printers based on printers capable of printing 4 D/A1 pages per minute or more and under \$50,000 USD for large-format printing of technical documents as of July, 2017 and representing more than 80% of the market in the US and Europe in 2017 according to IDC. For testing criteria, see hp.com/go/pagewidexlclaims.
7. Based on internal HP testing on the HP PageWide XL printer compared to using two different printers (one monochrome LED printer, one color printer). For testing criteria, see hp.com/go/pagewidexlclaims.
8. Using HP SmartStream software compared with using equivalent software programs. For testing criteria, see hp.com/go/pagewidexlclaims.
9. Production costs savings based on an HP PageWide XL 5100 Printer compared with a combination of a mid-volume monochrome LED printer and a mid-volume color production printer (both under \$40,000 USD) as of April, 2017. Production costs consist of supplies and service costs, printer energy costs, and operator costs. For testing criteria, see hp.com/go/pagewidexlclaims.
10. Only compatible in conjunction with the optional HP PageWide XL 4000 Accessory Upgrade Kit.
11. The HP PageWide XL Folder and F60 Folder are optional accessories. The HP PageWide XL High-capacity Stacker and Top Stacker may be an optional accessory. Options vary by region
12. ISO/US technical and offset standards include American ANSI and Architectural page size standards, ISO A technical document standard, and ISO B offset page size standard.
13. Based on supplies and service costs for comparable LED printers under \$150,000 USD for large-format printing of technical documents as of April, 2015 which represent more than 80% of the share of high-volume LED printers in the US and Europe in 2014 according to IDC. For testing criteria, see hp.com/go/pagewidexlclaims.
14. Based on supplies and service costs for comparable color printers capable of printing 4 D/A1 pages per minute or more and under \$150,000 USD for large-format printing of technical documents as of April, 2015 and representing more than 80% of the market in the US and Europe in 2014 according to IDC. For testing criteria, see hp.com/go/pagewidexlclaims.
15. Based on supplies and service costs. Monochrome technical document printing costs for comparable mid-volume LED printers based on printers for large-format printing of technical documents at speeds between 8 and 13 D/A1 per minute as of July, 2017 which represent more than 80% of the share of mid-volume LED printers in the US and Europe in 2017 according to IDC. Color technical document printing costs for comparable mid-volume color printers based on printers capable of printing 4 D/A1 pages per minute or more and under \$50,000 USD for large-format printing of technical documents as of July, 2017 and representing more than 80% of the market in the US and Europe in 2017 according to IDC. For testing criteria, see hp.com/go/pagewidexlclaims.
16. Conclusions based on internal HP testing for a specific use scenario. Comparable printers using LED technology based on LED printers capable of printing 8 to 13 D/A1 pages per minute and which represent more than 80% of the share of mid-volume LED printers in the US and Europe according to IDC as of July 2017. For testing criteria, see hp.com/go/pagewidexlclaims.
17. Printing to non-HP large format printers is done through specific drivers, each of them covering several printers: Océ Windows Printer Driver (WPD), KIP Windows Driver WHQL, RICOH PostScript Driver, Xerox WHQL Driver. For more information, please visit: hp.com/go/smartstream/trial.
18. Compared to prints produced with HP 970/971/980 inks that are fade and moisture resistant per ISO 11798 Permanence and Durability Methods certification. For testing criteria, see hp.com/go/pagewidexlclaims.
19. Conclusions based on internal HP testing for a specific use scenario. Comparable printers using LED technology based on LED printers capable of printing 4 to 6 D/A1 pages per minute and which represent more than 80% of the share of mid-volume LED printers in the US and Europe according to IDC as of April, 2015. For testing criteria, see hp.com/go/pagewidexlclaims.
20. The Adobe PDF Print Engine (APPE) is Adobe's high speed, high fidelity print platform. Version 4 extends APPE's leading edge for print reproduction with new performance efficiencies and breakthrough rendering features. APPE 4 enables printers to increase workflow efficiency and capitalize on the profit potential of innovations in inkjet print technology. To learn more, visit adobe.com/products/pdfprintengine.
21. Support provided for a limited number of brands and models to be available after the introduction of HP SmartStream for HP PageWide XL, HP DesignJet, and non-HP large-format printers. For more information, see hp.com/go/smartstream/trial.
22. Using HP SmartStream software, renaming can be completed saving up to 70% of the time. Conclusion based on an HP internal test, November 2017 comparing HP SmartStream Document Management module with equivalent manual process renaming a 85-page document.
23. Data is consolidated across all your HP PageWide XL printers and multifunction printers, with the exception of HP PageWide XL blueprinters, as of November, 2017.
24. HP PageWide XL PostScript/PDF Upgrade Kit required for HP PageWide XL 4000 Printers. Availability and pricing conditions vary by region. Please check hp.com/go/clickpagewidexl for more information.
25. Once image is selected, one-click printing when printing the entire file without any modifications to the print settings. Applicable to PDF, JPEG, TIFF, and HP-GL/2 files. HP Click printing software is compatible with HP Signage Suite.
26. Monochrome scanning: D/A1 image with black text graphics at 200 dpi; color scanning: D/A1 fully-inked color image at 200 dpi, 24-bit RGB.
27. HP Large-format Media take-back program availability varies. Some recyclable HP papers can be recycled through commonly available recycling programs. Recycling programs may not exist in your area. See HPLFMedia.com/hp/ecosolutions for details.
28. BMG trademark license code FSC®-C115319, see fsc.org. HP trademark license code FSC®-C017543, see fsc.org. Not all FSC®-certified products are available in all regions. For information about HP large format printing materials, please visit HPLFMedia.com.
29. Based on ink consumption and color gamut measurements of HP papers with ColorPRO Technology and standard papers without ColorPRO Technology when printed on the HP PageWide XL 8000 Printer.
30. Based on third-party testing conducted in 2014 and 2015, no ozone was detected.
31. Special ventilation equipment (air filtration) is not required to meet U.S. OSHA requirements. Special ventilation equipment installation is at the discretion of the customer. The need for special ventilation is not anticipated. In case of doubt, customers should consult state and local requirements and regulations.
32. EPEAT registered where applicable and/or supported. See epeat.net for registration status and rating by country.
33. Visit hp.com/recycle to see how to participate and for HP Planet Partners program availability; program may not be available in your area. Where this program is not available, and for other consumables not included in the program, consult your local waste authorities on appropriate disposal.
34. Financing and service offerings available through Hewlett-Packard Financial Services Company and its subsidiaries and affiliates (collectively HPFSC) in certain countries and is subject to credit approval and execution of standard HPFSC documentation. Rates and terms are based on customer's credit rating, offering types, services, and/or, equipment type and options. Not all customers may qualify. Not all services, and/or offers are available in all countries.
35. Proven HP PageWide Technology powers HP PageWide Web Presses—currently producing 4 billion impressions monthly—and HP X series business printers.



